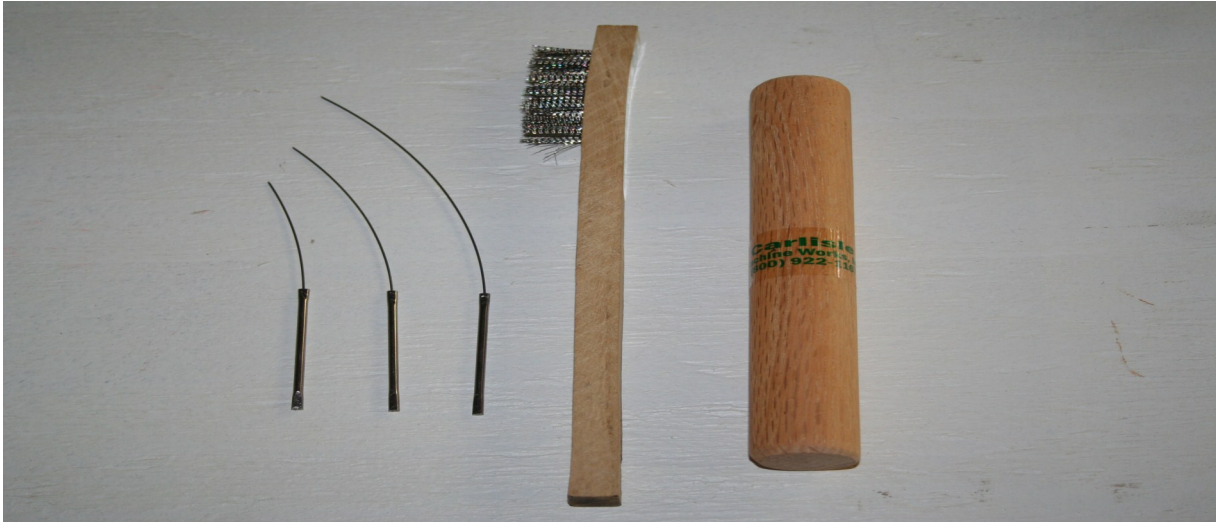




**Carlisle**  
Machine  
Works, Inc.

**CARLISLE TORCH CLEANING KIT  
ITEM # 10A000-1000**



Kit includes 1 stainless steel wire brush, 1 wooden dowel and 3 different lengths of cleaning wire and instructions. This kit will clean all Carlisle torches including the CC, Mini, Hellcat, Wildcat, CC+, CC++, Lucio and Black Widow.

Step #1

**Be sure gas and oxygen  
are turned off at the  
torch and tanks.**

(A Dirty Torch)

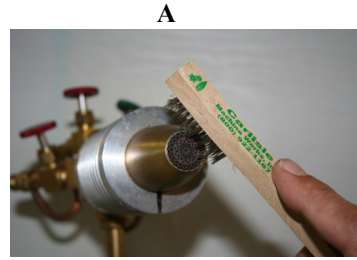


P.O. Box 746, 412 S. Wade Blvd. , Bldg. #5, Millville, NJ 08332  
Phone: (800) 922-1167 Fax: (856) 825-5510  
Web Site: [www.carlismachine.com](http://www.carlismachine.com) E-Mail: [carlisle@carlismachine.com](mailto:carlisle@carlismachine.com)

## CLEANING INSTRUCTIONS (Cont.)

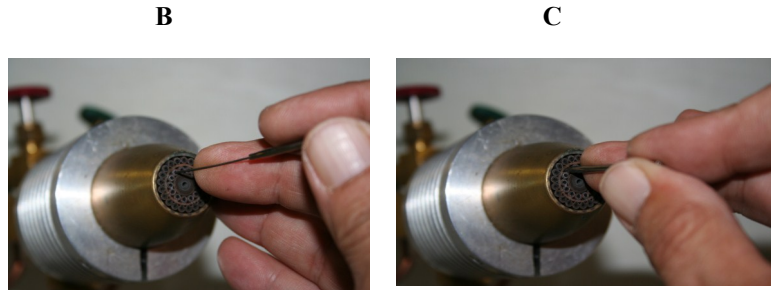
**STEP #2**  
**Fig.A**

Gently brush the face of the burner with the wire brush supplied.



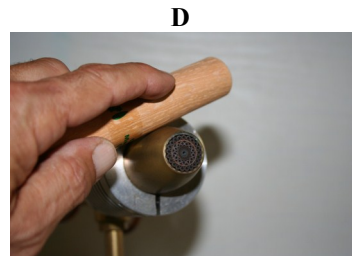
**STEP #3**  
**Fig. B and C**

Pick a starting point on the outer fire tube assembly and insert the cleaning wire into each port to clean. Be sure to ream all ports until the cleaning wire travels the complete distance through the tubes until the wire bottoms out inside the torch.



**STEP #4**  
**Fig. D**

After cleaning all of the ports, with the face of the torch facing downward, tap around the barrel or nose cone to release the carbon dislodged during cleaning.



**STEP #5**  
**Fig. A**

Step #5 Brush the face of the torch again.

**Repeat Step #2**  
**(Figure A)**



**STEP # 6**

Complete by turning the gas and oxygen on at the tanks and fire up the torch. Run the torch high, then once again tap around the nose cone of the torch. The sparks coming from the outer fire are the remainder of the carbon that was dislodged during cleaning.

