

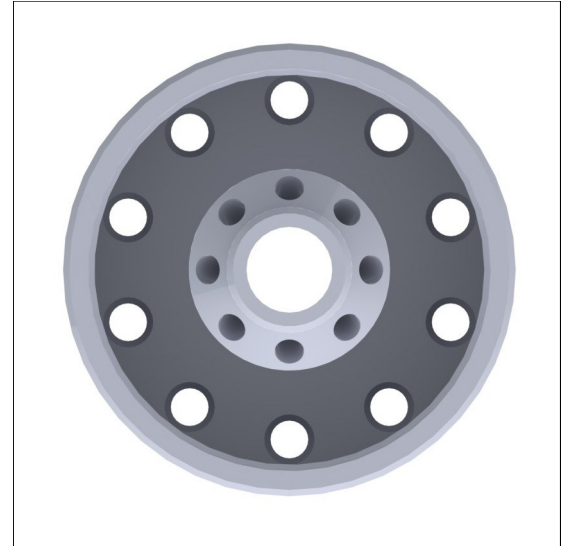


## JM SERIES GAS/AIR BURNER TIPS

The JM Series Air Burner Tips are single orifice gas air burner tips that can run on a premix of gas and air or a supply of raw gas. The patented open fire design allows the single orifice centerfire and accompanying piloting to draw in atmospheric air through the venting in the bottom of the cup. This innovation allows the burner to run with atmospheric inspiration of the air. The JM Series Burner Tips can run on natural gas, mixed gas, and propane with or without air.

The JM Series is offered in several sizes from the JM-1 to the JM-17. The JM Series Burner Tips are manufactured from either stainless steel, plain steel, or cast iron depending on the size of the tip. Please see the chart for specific material information. Some tips are offered in several different thread sizes, to accommodate the many possible uses for these tips. There are also some tips that will have both female and male thread sizes listed. These units are double threaded and so have both thread sizes.

These tips are used in many different applications. They can be used in furnaces, pre-heat applications, soldering, jewelry manufacturing, pilot applications, and glass annealing to name a few. These tips work well with Carlisle Hand Torches (See Bulletin References) and in custom assemblies. Please contact your Carlisle Representative with your special needs.



JM-1 Burner Tip (Face)  
19C013-0000



JM-1 Burner Tip (Side)  
19C013-0000

### BULLETIN REFERENCES

Hand Torches- Bulletins 22A, 22B, 22C, 22D, 22E  
Adapters- Bulletin 24C

Carlisle JM Series Air Burner Tips are pre-mixed. As with any pre-mixed burner, be sure to use the proper equipment:

Mixers- Bulletins 17C, 16E  
Controls- Bulletins 16A, 16E  
Safety- Bulletins 18A, 18B

**Carlisle Machine Works, Inc.,**  
**P.O. Box 746, 412 S. Wade Blvd., Bldg. #5, Millville, NJ 08332**  
**Phone: (856) 825- 0627 Fax: (856) 825 - 5510**  
**Web Site: [www.carlislemachine.com](http://www.carlislemachine.com) E-Mail: [carlisle@carlislemachine.com](mailto:carlisle@carlislemachine.com)**  
**Toll Free In Continental US (800) 922-1167**



# BURNER TIP SERIES SPECIFICATIONS CHARTS

The following section of charts give specific information concerning Carlisle JM Series Air Burner Tips. The summary below will define a few of the chart's fields. If there are any further questions concerning these charts, contact Carlisle directly and our sales staff will be happy to help you.

| CATALOG NUMBER | BURNER NUMBER | MATERIAL | DIAMETER | HEIGHT | TOTAL PORT AREA | THREAD SIZE            | BTU/HR @ 12 W.C. NATURAL GAS & AIR MIX |
|----------------|---------------|----------|----------|--------|-----------------|------------------------|--|
| 19C001-0000    | JM-1          | SS       | 7/8"     | 1 1/8" | 0.0265          | 3/8"-32 F              | 11,700                                 |
| 19C011-0000    | JM-1          | SS       | 7/8"     | 1 1/8" | 0.0265          | 3/8"-40 F              | 11,700                                 |
| 19C012-0000    | JM-1          | SS       | 7/8"     | 1 1/8" | 0.0265          | 7/16"-24 F             | 11,700                                 |
| 19C013-0000    | JM-1          | SS       | 7/8"     | 1 1/8" | 0.0265          | 1/8" NPTF<br>1/4" NPTM | 11,700                                 |
| 19C002-0000    | JM-3          | SS       | 1 1/8"   | 1 5/8" | 0.0693          | 3/8"-32 F              | 30,300                                 |
| 19C014-0000    | JM-3          | SS       | 1 1/8"   | 1 5/8" | 0.0693          | 3/8"-40 F              | 30,300                                 |
| 19C015-0000    | JM-3          | SS       | 1 1/8"   | 1 5/8" | 0.0693          | 7/16"-24 F             | 30,300                                 |
| 19C016-0000    | JM-3          | SS       | 1 1/8"   | 1 5/8" | 0.0693          | 1/8" NPTF              | 30,300                                 |
| 19C003-0000    | JM-4          | SS       | 1 5/16"  | 2"     | 0.1567          | 3/8" NPTF              | 65,900                                 |
| 19C004-0000    | JM-5          | SS       | 1 15/16" | 2 1/8" | 0.2098          | 1/2" NPTF              | 91,000                                 |
| 19C005-0000    | JM-7          | PS       | 2 1/4"   | 2 5/8" | 0.3518          | 3/4" NPTF              | 154,100                                |
| 19C006-0000    | JM-9          | CI       | 2 1/2"   | 2 1/2" | 0.6450          | 1" NPTF                | 282,900                                |
| 19C007-0000    | JM-11         | CI       | 3"       | 3"     | 0.9486          | 1 1/4" NPTF            | 414,100                                |
| 19C008-0000    | JM-13         | CI       | 3 1/2"   | 3 1/2" | 1.4020          | 1 1/2" NPTF            | 614,000                                |
| 19C009-0000    | JM-15         | CI       | 4"       | 4"     | 1.7170          | 2" NPTF                | 754,500                                |

|   |   |
|---|---|
| <p><i>CATALOG NUMBER</i><br/> <i>BURNER NUMBER</i><br/> <i>FOCAL LENGTH</i><br/> <i>OVERALL FLAME LENGTH</i><br/> <i>BTU/HR</i></p> | <p>This represents Carlisle's number by which the burner tip can be ordered.<br/>                 This number represents a more universally recognized model number.<br/>                 This is the length of the focused smaller blue flame under normal operation.<br/>                 This is the length of the flame from the face of the tip to the very end.<br/>                 The approximate BTU/HR of the tip at 12" W.C. natural gas and air mixture.</p> |
|---|---|

**Carlisle Machine Works, Inc.,**  
**P.O. Box 746, 412 S. Wade Blvd., Bldg. #5, Millville, NJ 08332**  
**Phone: (856) 825-0627    Fax: (856) 825-5510**  
**Web Site: [www.carlislemachine.com](http://www.carlislemachine.com)    E-Mail: [carlisle@carlislemachine.com](mailto:carlisle@carlislemachine.com)**  
**Toll Free In Continental US (800) 922-1167**

